

Anti-Myeloperoxidase Antibody
Mouse monoclonal antibody to Myeloperoxidase
Catalog # AP61619**Specification**

Anti-Myeloperoxidase Antibody - Product Information

Application	IHC
Primary Accession	P05164
Reactivity	Human
Host	Mouse
Clonality	Monoclonal
Calculated MW	83869

Anti-Myeloperoxidase Antibody - Additional Information**Gene ID** 4353**Other Names**

Myeloperoxidase; MPO

Target/Specificity

KLH-conjugated synthetic peptide encompassing a sequence within human Myeloperoxidase. The exact sequence is proprietary.

Dilution

IHC~~1:100~500

Format

Mouse IgG2b. Liquid in PBS containing 50% glycerol, 0.2% BSA and 0.09% (W/V) sodium azide.

Storage

Store at -20 °C. Stable for 12 months from date of receipt

Anti-Myeloperoxidase Antibody - Protein Information**Name** MPO ([HGNC:7218](#))**Function**

Part of the host defense system of polymorphonuclear leukocytes. It is responsible for microbicidal activity against a wide range of organisms. In the stimulated PMN, MPO catalyzes the production of hypohalous acids, primarily hypochlorous acid in physiologic situations, and other toxic intermediates that greatly enhance PMN microbicidal activity (PubMed:9922160). Mediates the proteolytic cleavage of alpha-1-microglobulin to form t-alpha-1-microglobulin, which potently inhibits oxidation of low-density lipoprotein particles and limits vascular damage (PubMed:25698971).

Cellular Location

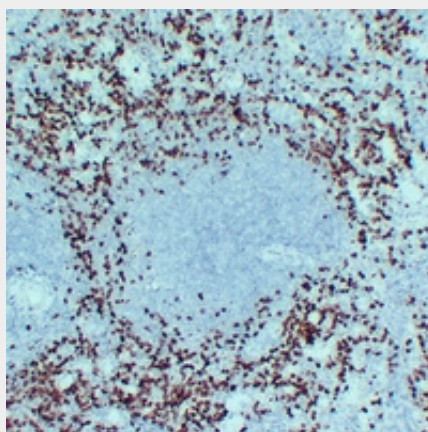
Lysosome.

Anti-Myeloperoxidase Antibody - Protocols

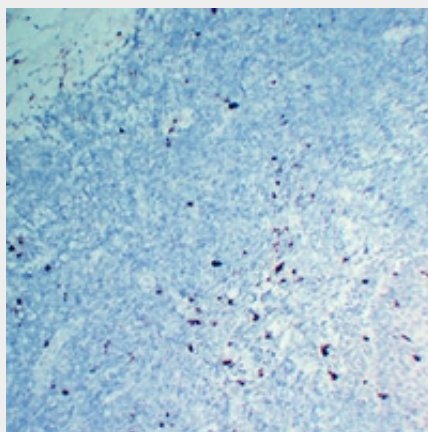
Provided below are standard protocols that you may find useful for product applications.

- [Western Blot](#)
- [Blocking Peptides](#)
- [Dot Blot](#)
- [Immunohistochemistry](#)
- [Immunofluorescence](#)
- [Immunoprecipitation](#)
- [Flow Cytometry](#)
- [Cell Culture](#)

Anti-Myeloperoxidase Antibody - Images



Immunohistochemical analysis of Myeloperoxidase staining in human spleen formalin fixed paraffin embedded tissue section. The section was pre-treated using heat mediated antigen retrieval with sodium citrate buffer (pH 6.0). The section was then incubated with the antibody at room temperature and detected using an HRP conjugated compact polymer system. DAB was used as the chromogen. The section was then counterstained with haematoxylin and mounted with DPX.



Immunohistochemical analysis of Myeloperoxidase staining in human tonsil formalin fixed paraffin embedded tissue section. The section was pre-treated using heat mediated antigen

retrieval with sodium citrate buffer (pH 6.0). The section was then incubated with the antibody at room temperature and detected using an HRP conjugated compact polymer system. DAB was used as the chromogen. The section was then counterstained with haematoxylin and mounted with DPX.

Anti-Myeloperoxidase Antibody - Background

KLH-conjugated synthetic peptide encompassing a sequence within human Myeloperoxidase. The exact sequence is proprietary.